

# ROOMS

Promotional flyer from  
Sept. 1<sup>st</sup> through Dec. 31, 2010



OPERATORY  
**EXCLUSIVE  
OFFERS**

Look for Patterson  
« **12 months  
no payment** »  
offers inside!

To be **more efficient,**  
**more productive**  
and add

**more enjoyment**

to your working day, **take advantage** of our

**SPECIAL no payment offer**

until Fall 2011!



Receive a

**FREE**

**Toshiba 46" HD LCD MONITOR**

(\$1,500 Value)



when you purchase

# Enterprise Suite 9

**16 new presentations • 54 updated presentations**

Bring the latest and greatest patient education into your practice with CAESY Enterprise Suite 9! With over 70 new and updated topics to help your practice grow, Suite 9 contains the most requested topics and the latest in dental technologies, plus new live-action video, fresh 3-D animations and superior software navigation.



Limited time offer. Prices and promotions are subject to change without notice.



Call us at 1.866.449.7282 or email us at [techsales@pattersondental.ca](mailto:techsales@pattersondental.ca)



Purchase the complete EagleSoft Suite and

# RECEIVE A \$6,000 credit

towards the purchase of any of these complementing Technology Products!



CAESY enterprise



Patterson computers



intraoral cameras



digital x-rays

and **CREATE**



# OPTIMIZE WORKFLOW AND DECREASE STRESS!

Would you like to **lower stress**,  
be **more productive** and  
provide a **higher level**  
of customer service?

Some conditions may apply. This offer cannot be combined with any other offer.  
Monthly rates based on 60 month lease with MEDICAPITAL-Dentoplan.

Patterson offers you  
**12  
months  
no payment**

with any purchase of \$25,000 or more on operatory equipment  
including dental chair, operatory cabinet, dental light, dental stools

4

## Productivity at 12 o'clock.

Proper positioning is paramount to productive dentistry. No matter what delivery style you choose. With A-dec 500 at 12 o'clock, you get better visibility, less stretching and reduced motion for you and your assistant.

Add the ability to seamlessly integrate various hand instruments and you have a completely flexible system designed to offer better ergonomics and efficiency than any other 12 o'clock delivery solution available today.

This system:

- Reduces stress and increases productivity
- Streamlines the flow of materials into and out the treatment room
- Increases accessibility to ancillaries and technology

**a dec**  
reliablecreative**solutions**

Chairs  
Delivery Systems  
Lights  
Monitor Mounts  
Cabinets  
Handpieces  
Maintenance

**To see how you can take productivity to the next level,  
contact your Patterson Representative today.**



# Proven.

Unrivalled innovation, thoughtful design, lasting integrity: A-dec 500® is based on decades of collaboration with dentists worldwide. Such cooperation has led to pressure-mapped patient comfort, robust integration of handpieces and technology to minimize reach, and a touchpad that provides single-point system control.

In a world that demands dependability, A-dec delivers a proven solution without a single compromise.



- Chairs
- Delivery Systems
- Lights
- Monitor Mounts
- Cabinets
- Handpieces
- Maintenance

Contact A-dec at 1.800.547.1883 or visit [a-dec.com](http://a-dec.com) to learn more.

Triangle Optiline Rear Delivery System cabinets feature a "satellite" work surface with 4,080 square inches of work surface movement, "Hands Free" storage shelves, upper and lower storage cabinets, adjustable shelves, removable drawers, an optional PLANMECA Compact Dual Delivery System, an optional vacuum system as well as accommodations for nitrous oxide/oxygen flow meters, communications systems and pivoting 360-degree monitor mounts.



6

**PLANMECA**  
triangle



SingLED Ceiling Mount

**PLANMECA**<sup>®</sup>  
SingLED<sup>™</sup>



**PLANMECA Triangle OPTILINE Rear Delivery System**



Patterson offers you

**12**  
**months**  
**no payment**

with any purchase of \$25,000 or more on operatory equipment  
including dental chair, operatory cabinet, dental light, dental stools.

Some conditions may apply. This offer cannot be combined with any other offer.  
Monthly rates based on 60 month lease with MEDICAPITAL-Dentoplan.



SingLED Track Mount  
Two Trolley

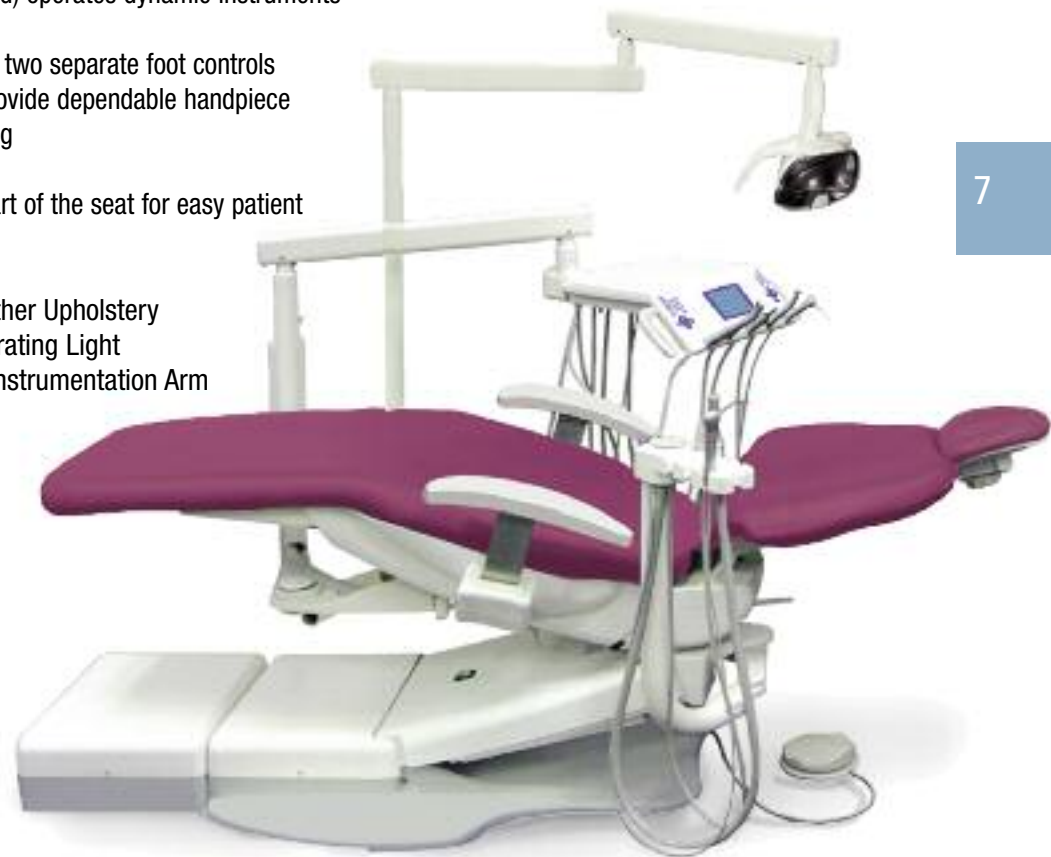
SingLED Track Mount  
Single Trolley

Hands-Free  
solution to  
infection control  
for turning the  
light On or Off.

# 10 Times Better than a Halogen Operating Light

Fully flexible for right- or left-handed use, the NEW Planmecca Global PM 270 is packed with reliable high tech features.

- Single dual mode foot control (U.S. Patented) operates dynamic instruments or programs and positions chair
- Simple disc design eliminates the need for two separate foot controls
- Optical sensors and solid-state circuitry provide dependable handpiece activation and independent chair positioning
- Exclusive built-in TFT video monitor
- Innovative armrests retract and become part of the seat for easy patient entry and exit
- Stable double articulating headrest
- Aseptic, durable and seamless Ultra Leather Upholstery
- Optional Planmecca® SingLED™ LED Operating Light
- Optional rear mounted RH/LH Assistant Instrumentation Arm



7

## OPTIMIZE WORKFLOW AND DECREASE STRESS!

Would you like to  
**lower stress,**  
 be  
**more productive**  
 and provide a  
**higher level**  
 of customer service?



● ● ● ●  
**TENEO**

True simplicity results from concentrating on essentials and close attention to detail. Our goal was to achieve a successful blend of cutting-edge technology and proven design concepts. The outcome is a completely new treatment centre that engenders immediate trust and allows you to achieve outstanding treatment results. How is this possible? By combining easy operation, innovative comfort and high-class design.



**PROMOTION TENEO**

8

Buy a Comfort and Innovation packages and

**RECEIVE**

the clinical and SIVISION packages

**FREE!**

(Value of over \$16,000)

● ● ● ●  
**C4+**

The user-friendly features of the C4+ not only eliminate unhealthy fatigue symptoms, but also promote an optimum workflow. Ideal for two-handed or four-handed treatment, the C4+ provides the ergonomic benefits of the sliding track concept - easy positioning of the dentist element, efficient interaction between the dentist and the assistant, and unrestricted access to the treatment chair.

C8+  
Starting at  
**\$381**  
per month



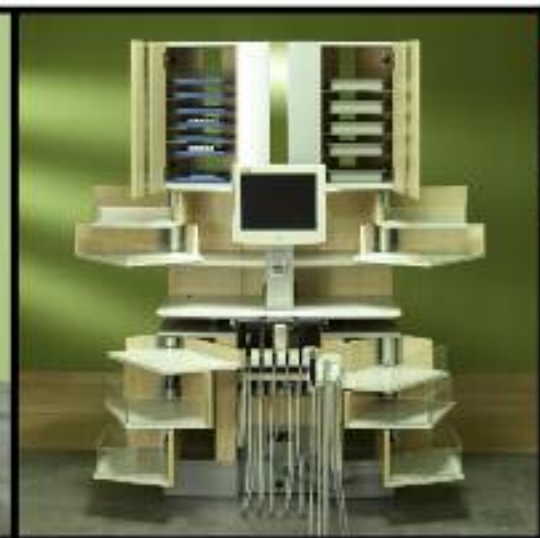
C4+  
Starting at  
**\$810**  
per month

● ● ● ●  
**C8+**

Available in numerous versions, the C8+ adapts to individual modes of working. Thanks to its modular design philosophy, the C8+ is easy to modify and upgrade. It goes without saying that Sirona gives top priority to top quality workmanship and materials. So if you opt for the C8+, you will secure genuine flexibility for decades to come.



**KAPPLER®**  
The Furniture Company



9

# OPTIMIZE WORKFLOW AND DECREASE STRESS!

Would you like to **lower stress**,  
be **more productive** and  
provide a **higher level** of customer service?

Patterson offers you

# 12 months no payment

with any purchase of \$25,000 or more on operatory equipment  
including dental chair, operatory cabinet, dental light, dental stools.



Some conditions may apply. This offer cannot be combined with any other offer. Monthly rates based on 60 month lease with MEDICAPITAL-Dentoplan.

**sirona.**  
The Dental Company



### MIDMARK ARTIZAN CENTRAL STATION

Artizan Central Stations are the ideal solution for multi-room plans. Saving valuable floor space, central stations offer storage on both sides for the dentist and assistant. Additional savings are provided as the central station positions one x-ray for utilization in two rooms and one sink for two operatory entries.

### MIDMARK ULTRATRIM DENTAL CHAIR



Offers exceptional clinician access. We carefully plotted essential support areas for a wide range of body types, allowing us to remove materials in just the right place. The result is a chair back that is narrower and 40% thinner than our standard chair back.

10



If you are looking to renovate an operatory room, equip that empty plumbed room or



### NEW Midmark Elevance™ Dental Chair

## OFFER ONE

For each UltraComfort® or UltraTrim® Dental Chair, Asepsis 21® Instrument Delivery System & Midmark Operating Light, you will **receive** your choice of **ONE** of the following from Midmark:

- ★ Ultraleather™ Upgrade (**\$611 Value**)
- ★ Dentist Stool (**\$720 Value**)

## OFFER TWO

For each UltraComfort® or UltraTrim® Dental Chair, Procenter Instrument Delivery System & Midmark Operating Light, you will **receive** your choice of **TWO** of the following from Midmark:

- ★ Ultraleather™ Upgrade (**\$611 Value**)
- ★ Dentist Stool (**\$720 Value**)
- ★ Assistant's stool with Lumbar Support (**\$1,031 Value**)



### MIDMARK TRACK LIGHT MONITOR

The Track Light Monitor from Midmark combines the best in dental lighting with unparalleled monitor positioning, allowing you to enhance the patient experience while improving efficiency and case acceptance.

**MIDMARK  
DENTIST'S STOOL**

The Midmark operator stools are not only engineered to deliver premium styling and exceptional comfort, they are also ergonomically refined to address musculoskeletal pain common in dentistry.



**ASEPSIS UNIT**



**PROCENTER UNIT**



**OPTIMIZE WORKFLOW  
AND DECREASE STRESS!**

11

Would you like to  
**lower stress,**  
be  
**more productive**  
and provide a  
**higher level**  
of customer service?



Patterson offers you

**12 months  
no payment**

with any purchase of \$25,000 or more on operatory equipment  
including dental chair, operatory cabinet, dental light, dental stools.



Because we care.

build a new one, you may choose the following promotions when going with Midmark!

**OFFER THREE**

For each Elevance™ Dental Chair, Procenter Instrument Delivery System & Midmark Operating Light, you will **receive** your choice of **TWO** of the following from Midmark:

- ★ Ultraleather™ Upgrade (**\$611 Value**)
- ★ Dentist Stool (**\$720 Value**)
- ★ Assistant's stool with Lumbar Support (**\$1,031 Value**)

**CABINETS OFFER**

With the purchase of \$15,000 of Midmark Artizan Dental Furniture and/or Integra Dental Casework, you will **receive 5% discount** from Midmark.

\*Standard Dealer Pricing. Purchased and delivery : August 1 - December 15, 2010. These offers cannot be combined with Patterson's "12 months no payment " offer.

Some conditions may apply. This offer cannot be combined with any other offer. Monthly rates based on 60 month lease with MEDICAPITAL-Dentoplan.

# PREFERENCE ICC™

## THE **4** PHASE STERILIZATION SYSTEM



12

# Efficient sterilization

Preference ICC is more than just a “centre”. It’s a complete system designed to closely follow the phases of sterilization as recommended by the Centers for Disease Control (CDC). As a result, related steps are grouped together, simplifying and streamlining the entire process. Preference ICC also offers a large selection of modules, options, and colours. So whether you’re looking for a small make-ready cabinet or a complete, centralized sterilization room, you can create an efficient, streamlined system that’s specifically made to integrate with your practice.

- Process-based design for a consistent, intuitive sterilization protocol and simplified training
- Dozens of choices in laminate, solid surface, and Quartz® to match existing Preference® cabinetry or your colour scheme
- Heavy-duty hardware and surfaces to maximize long-term value
- Hands-free drawers, doors, faucet, and a motion-activated soap dispenser to minimize risk of cross contamination



**For more information on A-dec’s sterilization solution, Preference ICC, please contact your Patterson Representative today.**

Patterson offers you  
**12**  
months  
no payment

with any purchase of \$25,000 or more on operatory equipment

Including dental chair, operatory cabinet, dental light, dental stools.

Some conditions may apply. This offer cannot be combined with any other offer. Monthly rates based on 60 month lease with MEDICAPITAL-Dentoplan.

# Round, Evolved.

Upgrade your handpiece. Evolve your practice.

## Triangular Bur Shank

- Locks into turbine for superior cut performance.

## New Turbine Design

- Drive system engages triangular bur shank to provide faster cutting, superior control and improved precision.



13

Buy 3 ProDrive High-Speed handpieces and \$750 worth of ProDrive burs and

# GET 1 FREE ProDrive Handpiece

PLUS! Receive a full 2-year Warranty when you buy 7 handpieces or turbine upgrades.

## 3mm Bur Lengthening Feature

- Safe bur extension for difficult to reach areas.



## ProDrive, the Logical Evolution in Dentistry.

Unlike traditional friction grip design, ProDrive's revolutionary upgrade turbine and triangular bur system locks together for noticeably improved cut performance, superior control and improved precision.

You can experience ProDrive two ways, the ProDrive Upgrade Turbine for leading brand handpieces, or the ProDrive High-Speed Handpiece (standard or mini head). The ProDrive High-Speed Handpiece is the only handpiece to incorporate the ProDrive Turbine. Both options work with the triangular shank ProDrive Bur which is specifically designed to engage with ProDrive Upgrade Turbines and ProDrive High-Speed Handpieces. **Experience faster cutting, superior control & improved precision.**

**Evolve your practice. For more information or to place your order, contact your local Patterson representative or call 1-800-873-7683 | [www.prodrivesystems.com](http://www.prodrivesystems.com)**

See all your procedures  
in a **TRUE** light.  
Operator lights made with  
**100% TRUE LED.**

With the purchase of an  
**overLight™**

receive a

**FREE**

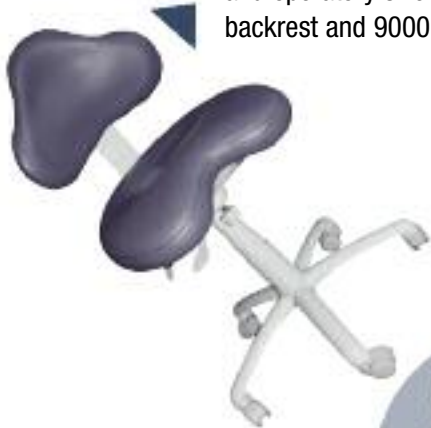
**430 SWL high-speed  
handpiece!**

**DentalEZ**

14

**9200 Series**

Our combination ergonomic  
stool to maximize proper fit  
and operatory size with 9100B  
backrest and 9000B seat.



**Dynacore 9400 Series**

A new therapeutic dynamic  
seating

- Allows 360° of the movement
- Offers immediate relief of back pain
- Easily adjust to your comfort level



**9000 Series**

This plush series  
brought sound  
ergonomics to the  
Dental industry.



**\$50  
Cash Rebate**  
on \$500 order\*

**\$150  
Cash Rebate**  
on \$1,500 order\*

**\$100  
Cash Rebate**  
on \$1,000 order\*

**2000 Series**

Comfort and durability meet  
to create this industry  
favorite for Dental offices.



**9100 Series**

ErgoFlex is our most  
ergonomically  
advanced series that  
serves any size  
operatory.



**3000 Plus Series**

This series responds  
to high volume  
patient workdays  
with extreme  
comfort and  
durability.



**Brewer  
DESIGN**

\*Cash Rebates from Brewer Design  
on selected models: 9000, 9100, 9200 and 9400 Series.



# TRADE & SAVE



## \$3,000 Cash Rebate

with the purchase  
of a ScanX® Classic  
(PN B7200)

## \$1,500 Cash Rebate

with the purchase  
of a ScanX® IO  
(PN B7100)

## \$750 Cash Rebate

with the purchase  
of a ScanX® Duo  
(PN D1000)

Trade in ANY phosphor plate system for a ScanX® Digital Imaging System & receive extensive savings. >>>>>>

## \$500 Cash Rebate

with the purchase of a ScanX® Duo,  
(PN D1000)  
a Spectra Caries Detection Aid  
(PN D4000)  
or a Polaris Intraoral Camera  
(PN D7000)

## \$750 Cash Rebate

with the purchase  
of a ScanX® IO  
(PN B7100)

## \$1,500 Cash Rebate or FREE Pan Plate

with the purchase  
of a ScanX® Classic  
(PN B7200)

# BUY & SAVE



### Utility Rooms Savings

Ask your Patterson Representative  
for more details!



# AIR TECHNIQUES INC.

Cash Rebates from Air Techniques  
Offers cannot be combined.

# Purify your air

The Epurair Air Purification System employs a HEPA filter, the world's most effective filter.

**H**igh  
**E**fficiency  
**P**articulate  
**A**ir



**\$845**

including the HEPA filter

HEPA is a standard that was developed by the American Nuclear Energy Commission. HEPA filters are the world's most efficient air filters. They are used in hospitals, pharmaceutical preparation and electronics manufacturing to eliminate very fine particulates. To be classified as a HEPA filter, the filter must eliminate 99.97% of all particles 0.3 microns or larger.

16

## THE SOLUTION

Developed by health care professionals

The Epurair HEPA System eliminates 99.97% of all airborne dust particles and allergens

### Dusty air!

#### POLLEN

Pollen comes from trees in the spring, and flowers, ragweed and other plants in the summer. It is carried by the wind and enters in the clinic via cracks, open doors and windows

#### DUST MITES

Mites and their feces reside in the dust present indoors. They are the primary cause for a large number of allergic reactions.

#### MOULD

The heat and humidity in a clinic foster the proliferation of mould. Thousands of airborne spores are therefore found in homes

#### CIGARETTE SMOKE

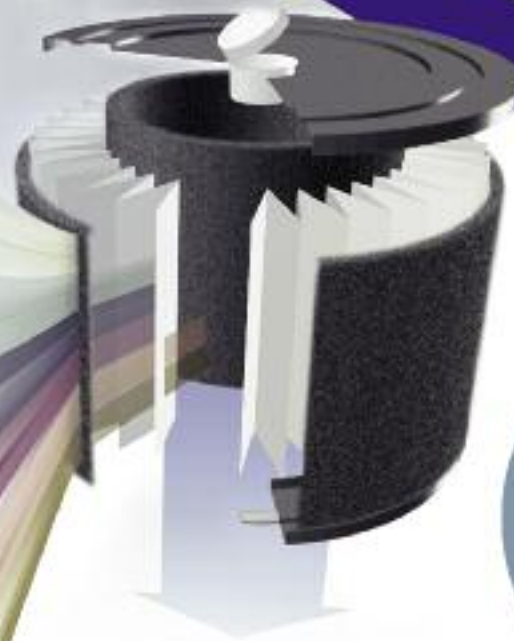
Each cigarette produces millions of microscopic dust particles, noxious gases and odours that travel in the air.

#### CHEMICAL SUBSTANCES

Enumerous chemical substances are present in today's environment such as resins, glues, varnishes, solvents, paints, household cleaning products, formaldehyde, and other volatile organic compounds known as VOCs.

#### SMOG

Visible during hot summer days, smog is a brownish-yellow vapour containing ozone and particulates. Ozone is a highly oxidizing compound that can provoke asthma attacks and heart attacks.



The system covers 3,000 square feet and the filter lasts 3 to 5 years.

**1. Pre-filter:** Air is drawn in through a carbon pre-filter that removes large particles, such as dust, pollen and fibres.

**2. HEPA filter:** The finest particles including bacteria, attached viruses, mould, radon, smoke, and dust are captured by the main HEPA filter.

**3. Carbon Trap:** The volatile organic compounds (VOCs) present as gases, fumes, and odours are absorbed by the carbon trap.

**4. Aromatherapy and MicroGerme Treatment:** The specially integrated diffuser can be used with one of our many natural, light fragrances. This diffuser can also be used with MicroGerme treatment to combat airborne mould. MicroGerme is an all-natural group of compounds that prevent the growth of mould in the air, in your ductwork and on the surfaces in the dental clinic.

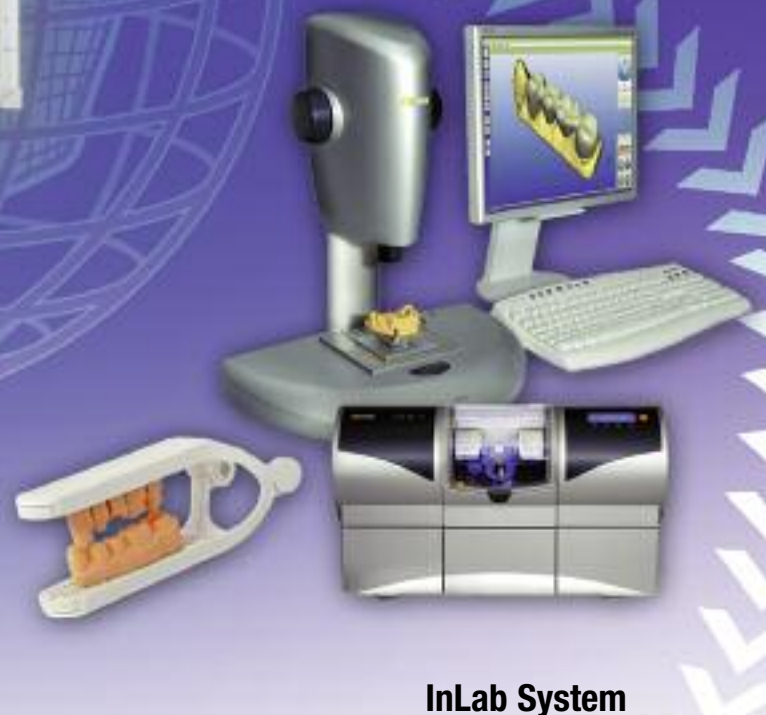


# Have a project?

## It's time to plan.



# Digital impressions are the future.



## CEREC Connect The Digital Dental Network

The CEREC Connect Software and the CEREC Connect Portal simplify collaboration between dental practices and laboratories. After they have registered, both parties can communicate via a shared software platform. Transmitting the data model takes only a few seconds and gives the lab an immediate and detailed insight into the treatment situation.

