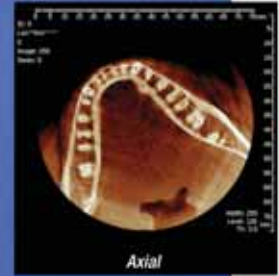


Seeing 3D like at the movies...but without the need of 3D glasses.

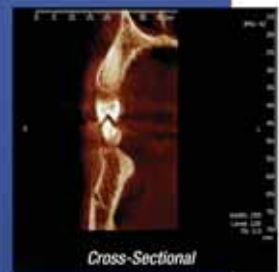
ProMax CBVT



Axial



Pseudo Panoramic



Cross-Sectional



3D Rendition

N·LITEN 3D

N-Liren 3D software allows tiled or simultaneous viewing of up to 16 different image combinations from a library of 512 open images with the use of the Dynamic Lightbox feature.

The Dental Reformat module is used to view and prepare implant site locations with a 1:1 ratio for exact replication of a patient's anatomy including soft tissue in colour and in greyscale.

The 3D Tool provides an instant image of the Axial, Coronal, and Sagittal views with rendering in colour or greyscale by the touch of a single button for any ROI (Region of Interest) in all three planes of reference.

PLANMECA's new **ProMax CBVT 3D** (Cone Beam Volumetric Tomography) with N-Liten 3D software now available exclusively through Patterson Dental Canada. This amazing new product offers 3-dimensional imaging and scanning at a rapid rate of 18 seconds per image with the smallest footprint of any 3D imaging unit available. The **ProMax CBVT 3D** flat panel semiconductor-based sensor provides high-sensitivity, excellent image resolution, and 1:1 ratio images. Best of all the **ProMax CBVT 3D** is available as a stand-alone unit shipped complete, or as an upgrade to your pre-existing PLANMECA ProMax X-ray. **The choice is yours.**

PLANMECA

ProMax 3D

Visit us on the web at www.planmeca.com